

FIG1

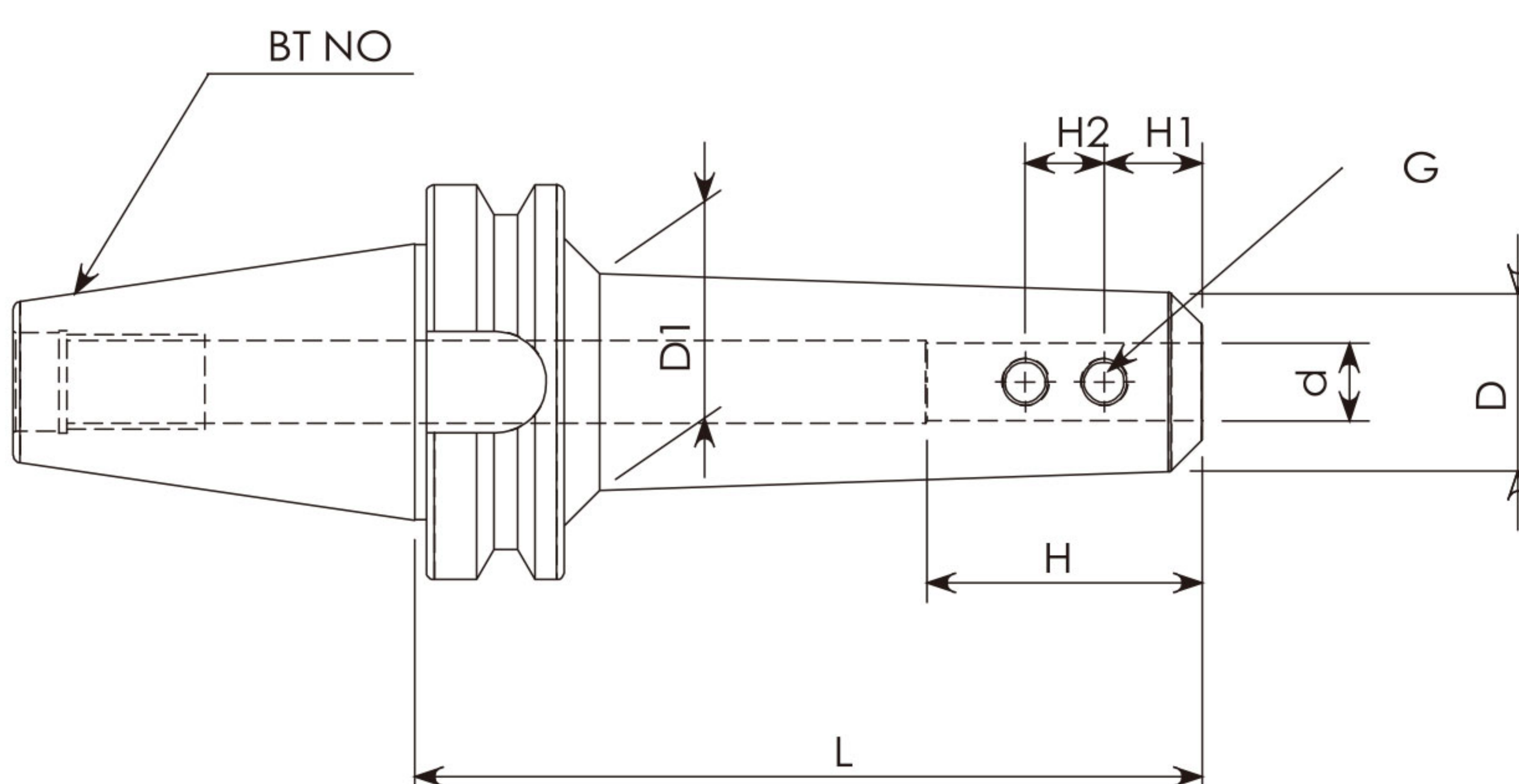


FIG2

SPECIFICATIONS 規格表

ORDER NO. 訂購編號	FIG	Ød	D	D1	L	H	H1	H2	G
BT30-SLA06-060	1	6	25	25	60	32	9	10	M6 x P1.0
BT30-SLA08-060		8	28	28		36	12	12	M8 x P1.25
BT30-SLA10-060		10	35	35			40		
BT30-SLA12-060		12	38	38		46	15	M10 x P1.5	
BT30-SLA16-075		16	45	45	75	55	14		
BT30-SLA20-075		20				60	24	20	M12 x P1.75
BT30-SLA25-075		25							
BT40-SLA06-075		6	25	25		100	32	9	10
BT40-SLA06-100									
BT40-SLA08-075		8	28	28	75	36	12	12	M8 x P1.25
BT40-SLA08-100					100				
BT40-SLA10-075		10	35	35	75	40	15		
BT40-SLA10-100					100				
BT40-SLA12-075		12	40	40	75	50	18	16	M10 x P1.5
BT40-SLA12-100					100				
BT40-SLA16-075		16	45	45	75	55	20	18	
BT40-SLA16-100					100				
BT40-SLA20-075		20	50	50	75	64	20	18	M12 x P1.75
BT40-SLA20-090					90		25	20	
BT40-SLA22.225-090		22.225	57	57		68	24	25	M16 x P2.0
BT40-SLA25-090		25							
BT40-SLA31.75-090		31.75	60	60		70	24	28	
BT40-SLA32-090		32				72			
BT40-SLA40-105		40	72	72	105	78	24	28	
BT40-SLA42-105		42							

應用於：▼重切削
▼一般銑削加工
▼直柄刀桿連結用
▼快速鑽孔加工

Application：▼Heavy cutting.
▼General milling.
▼Locking with straight tool shank.
▼Rapid drilling.

SPECIFICATIONS 規格表

ORDER NO. 訂購編號	FIG	Ød	D	D1	L	H	H1	H2	G
BT50-SLA06-105	1	6	25	25	105	32	9	10	M6 x P1.0
BT50-SLA06-150	2			30	150				
BT50-SLA06-200				35	200				
BT50-SLA08-105	1	8	28	28	105	36	12	12	M8 x P1.25
BT50-SLA08-150	2		25	30	150	36			
BT50-SLA08-200				35	200	40			
BT50-SLA10-105	1	10	35	35	105	40	15	12	
BT50-SLA10-150	2		30		150	45			
BT50-SLA10-200					200				
BT50-SLA12-105	1	12	40	40	105	46	18	16	M10 x P1.5
BT50-SLA12-150	2		35		150	55			
BT50-SLA12-200			35	45	200				
BT50-SLA16-105	1	16	45	45	105	50	20	18	
BT50-SLA16-150	2		40		150	65			
BT50-SLA16-200					200				
BT50-SLA20-105	1	20	50	50	105	60	25	20	M12 x P1.75
BT50-SLA20-150	2		45		150	70			
BT50-SLA20-200				55	200				
BT50-SLA25-105	1	25	60	60	105	100	24	24	M16 x P2.0
BT50-SLA25-150	2		55		150				
BT50-SLA25-200			55	65	200				
BT50-SLA32-105	1	32	62	62	105	100	24	28	
BT50-SLA32-150			60	65	150				
BT50-SLA32-200	2				200				
BT50-SLA40-120	1	40	80	80	120	90	30	32	M20 x P2.0
BT50-SLA40-150					150				
BT50-SLA40-200					200				
BT50-SLA42-120		42	80	80	120				
BT50-SLA42-150					150				
BT50-SLA42-200					200				
BT50-SLA50.8-120					120				
		50.8	95	95	120				

應用於：▼重切削
▼一般銑削加工
▼直柄刀桿連結用
▼快速鑽孔加工

Application：▼Heavy cutting.
▼General milling.
▼Locking with straight tool shank.
▼Rapid drilling.