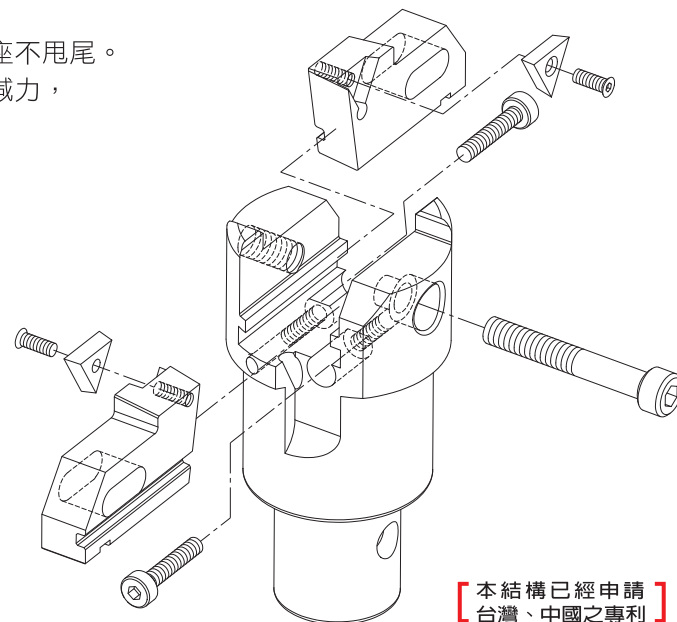


FEATURE 特性介紹

1. 率先採用全包覆式軌道，重切削穩定性極佳，確保刀片座不甩尾。
2. 獨家搪頭中間夾縫式，平穩夾持的設計理念，整體產生減力，延長刀片使用壽命。
3. 實用性的刻度微調方式，快速及精準提升校刀效率。
4. 搪頭表面及刀片座經特殊處理，永保如新，不易生鏽。

1. Unibody-clamping and interior-rail designs for stable boring and machining even under heavy duty course.
2. Special Gap design in the body for stable chucking arises the anti-force capability to extend longer life time.
3. Micro-adjustment function to offer more efficient and more precision cutting tool setting.
4. High quality alloy steel body with vacuum-heart treatment for rigid construction.

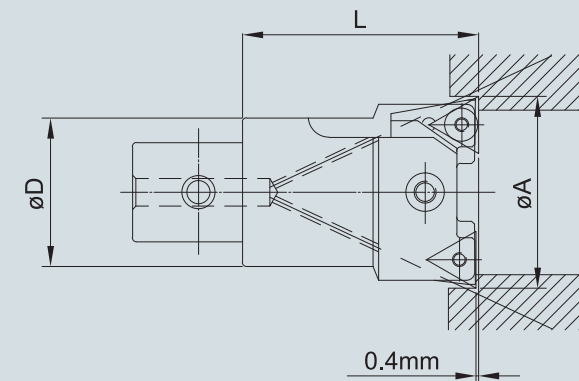


【本結構已經申請
台灣、中國之專利】



HCK90-122

HCK52-70



HCK32-42

SPECIFICATIONS 規格表

TYPE	ØA Range 搪孔範圍		ØD	L	Shank	Insert	Weight
型號	min	max			刀桿型號	刀片規格	搪頭重量
HCK25-33-02C	Ø 25	Ø 33	20	45	AD2	CCMT060204	0.12KG
HCK32-42-02C	Ø 32	Ø 42	24	55	AD3	CCMT060204	0.22KG
HCK32-42-02T						TCMT110204	
HCK40-55-02C	Ø 40	Ø 55	33	65	AD4	CCMT09T304	0.48KG
HCK40-55-02T						TCMT110204	
HCK52-70-02C	Ø 52	Ø 70	45	75	AD5	CCMT09T304	0.77KG
HCK52-70-02T						TCMT16T304	
HCK68-92-02C	Ø 68	Ø 92	54	85	AD6	CCMT120408	1.67KG
HCK68-92-02T						TCMT16T304	
HCK90-122-02C	Ø 90	Ø 122	70	100		CCMT120408	3.0KG
HCK90-122-02T						TCMT16T304	

INSERT 	SCREW 	WRENCH 	INSERT 	SCREW 	WRENCH
CC..0602..	S2502-4	T8	TC..1102..	S2502-4	T8
CC..09T3..	S4001-3	T15	TC..16T3..	S4001-3	T15
CC..1204..	S5002-6	T20			

穩定，精密，耐用性高