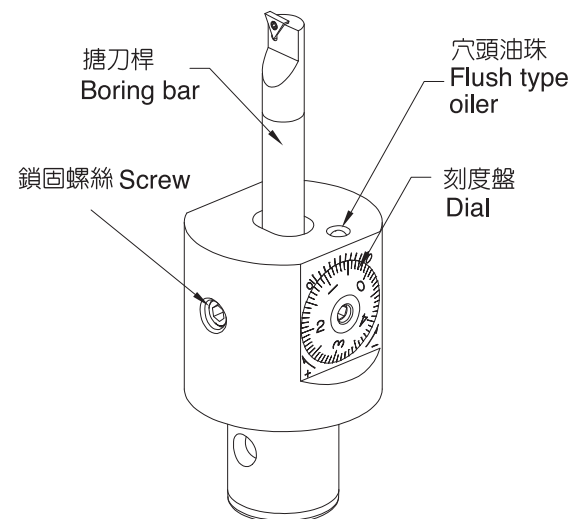


### FEATURE 特性介紹

1. 內藏式精密螺紋，經防鏽處理，耐磨耗、不鏽蝕。
2. 滑動軸經化學鍍處理，確保進給滑順不腐蝕。
3. 明顯易辨的刻度盤，每一刻度調整量為0.005mm(直徑0.01mm)。
4. 搪頭本體及各部零件皆採用高級合金鋼，經真空熱處理徹底強化由內而外的韌性，以提升耐磨與抗震之效能。

1. Interior precision thread with rustproof to be more durable and no corrosion.
2. Thw spool is treated by Chemical Ni plated for smooth movement and no corrosion.
3. Clear measuring dial and each unit is as 0.005mm (Dia. 0.01mm).
4. High quality alloy steel body and parts with vacuum-heat treatment for rigid construction.

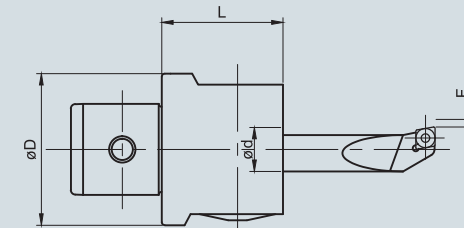
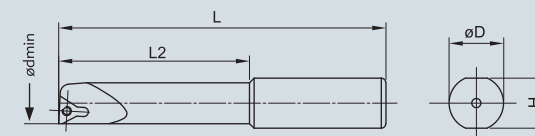
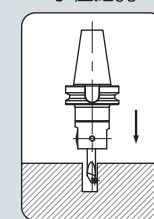


HBI 5

HBI 4

TYPE 型號	Shank 刀桿型號	F	Ød	ØD	L	Weight 搪頭重量
HBI 4	AD4	0~2.0	10	39	32	0.45KG
HBI 5	AD5	0~3.5	12	50	40	0.80KG
HBI 6	AD6	0~5.0	16	64	48	1.50KG

Small-dia Boring  
小徑搪孔



### HBI-4 BJ小徑搪刀桿

TYPE	ØD	Ød (Range)	L	L2	H	Insert	Screw	Wrench
型號		加工範圍				刀片規格	螺絲	板手
BJ1008-32	10	8~10	64	32	9	TB..0601..	MS2005A	T6
BJ1010-40		10~12	72	40				
BJ1012-45		12~16	77	27		TP..0902..	MS2506A	T9
BJ1016-45		16~20						
BJ1020-45		20~25						
*BJ10-5PCS	BJ1008-32	BJ1010-40	BJ1012-45	BJ1016-45	BJ1020-45			

### HBI-5 BJ小徑搪刀桿

TYPE	ØD	Ød (Range)	L	L2	H	Insert	Screw	Wrench
型號		加工範圍				刀片規格	螺絲	板手
BJ1208-32	12	8~10	64	32	11	TB..0601..	MS2005A	T6
BJ1210-40		10~12	72	40				
BJ1212-45		12~16	77	45		TP..0902..	MS2506A	T9
BJ1216-45		16~20		22				
BJ1220-45		20~25		25				
*BJ12-5PCS	BJ1208-32	BJ1210-40	BJ1212-45	BJ1216-45	BJ1220-45			

### HBI-6 BJ小徑搪刀桿

TYPE 型號	ØD	Ød (Range)	L	L2	H	Insert	Screw	Wrench
		加工範圍				刀片規格	螺絲	板手
BJ1608-32	16	8~10	74	32	15	TB..0601..	MS2005A	T6
BJ1610-40		10~12	75	40				
BJ1612-53		12~16	85	53		TP..0902..	MS2506A	T9
BJ1616-68		16~20	100	68				
BJ1620-83		20~25	115	35		TP..1103..	MS3008A	
BJ1625-90		25~30	122	40				
BJ1630-90		30~40	122	40				
BJ1640-90		40~50	122	40				
*BJ16-8PCS	BJ1608-32	BJ1610-40	BJ1612-53	BJ1616-68	BJ1620-83			BJ1625-90

穩定，精密，耐用性高